

# Micro

Minimalist design in metal

Datasheet

## Description

The plate is perforated with round holes.

The surface is pre-lacquered with a good hold-wearable. The plate withstands cleaning and is therefore well suited to environments where high standards are set requirements for hygiene.

## Color and light reflection

Hole size is 2.0mm. The pattern is diagonally placed. Standard color is white RAL 9010. Other colors can also be customized according to the customer's needs.

## Installation

Determined by different edge types. These plates can be installed in a hidden way. Can also be mounted in T-systems.

## Edge types

Clip-in or Lay-in.

## Acoustics

The back uses SoundTex high-quality sound-absorbing paper, with a thickness of 0.2 mm. After the test of the reverberation laboratory, NRC=0.70 with a perforation rate of 17%-22%. If you need to increase the sound absorption performance, you can add a glass wool plate with a thickness of 20mm-40mm on the back.

## Fire class

According to EN 13501-1: Individual sheet metal Class A1. Extra glass wool is mixed together to install Class A2-s1,d0.

## Release of formaldehyde

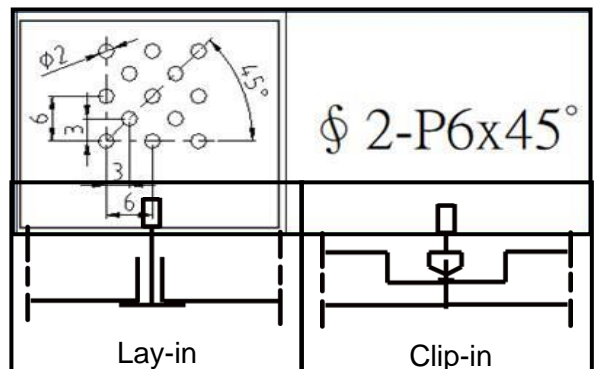
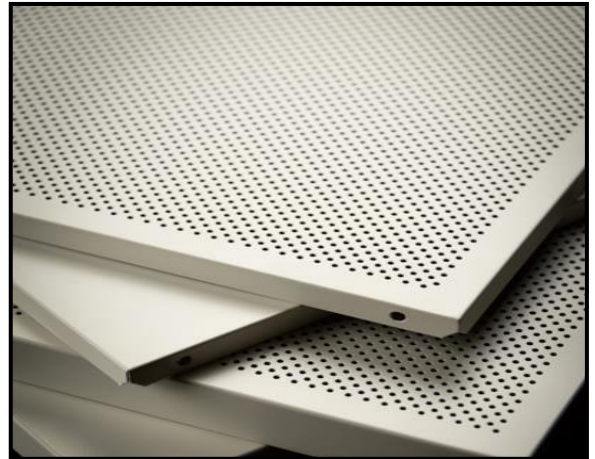
Class E1 (Indoor product standard).

## Bending tensile strength

Class 1/A/no load.

## Corrosion preventive

Corrosion protection according to EN 13964, Class 2a.



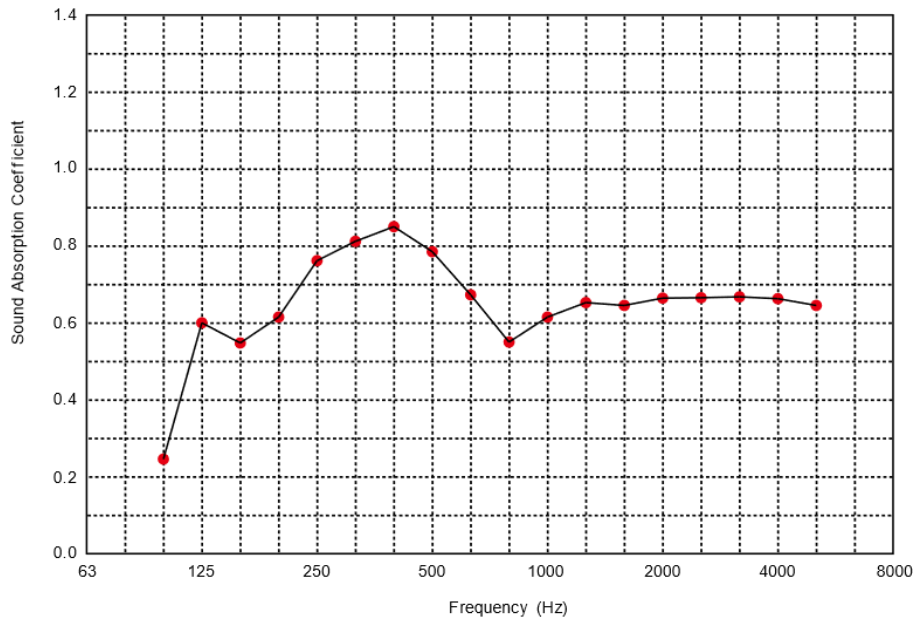
### Dimension

Lay-in 0,5mmx594x594xH12

Clip-in 0.5,mmx600x600xH25

The weight of the plate is approx. 1.5 kg/m<sup>2</sup>.

Sound test carried out at 250 mm TKH / lining.  
(No glass wool padding on the back)



NRC = 0,70

Frequency (Hz)	Absorption Coefficient $\alpha_s$
100	0.25
125	0.60
160	0.55
200	0.61
250	0.76
315	0.81
400	0.84
500	0.79
630	0.68
800	0.55
1000	0.61
1250	0.66
1600	0.64
2000	0.67
2500	0.67
3150	0.67
4000	0.66
5000	0.64